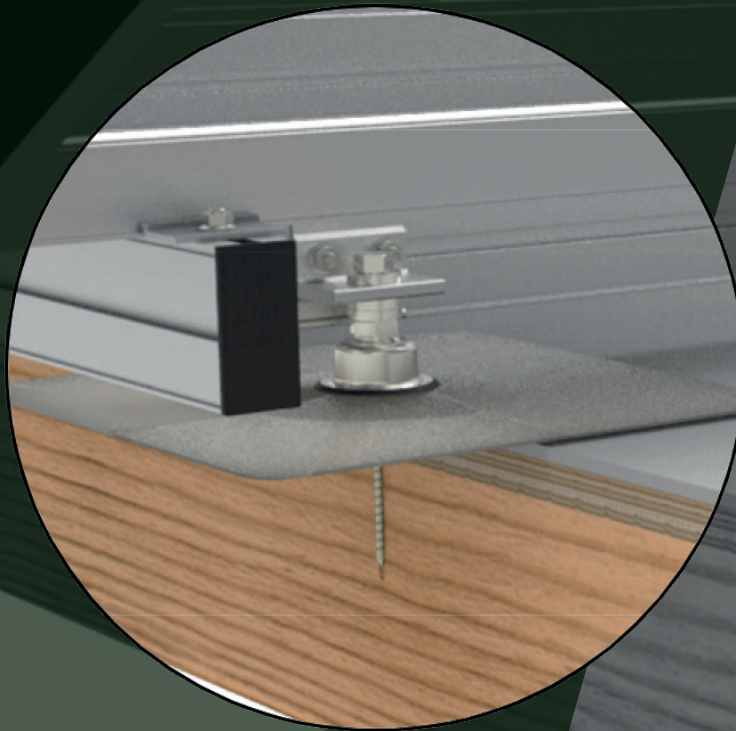




FIXNORDIC.DK

Roof Console - cold Roof Wooden Rafters

(Console System for Thermal Collectors, Heatpumps etc.)

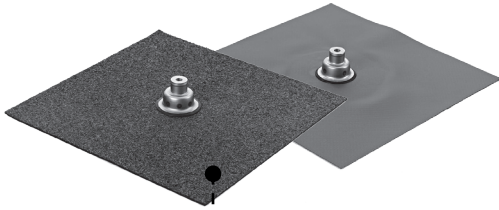


Guideline for installation of Roof Console on wooden rafters

FIXNORDIC
proof enough.



Product and Accessory Overview



Roof Console 1 layer

#220063-1xx 1 layer of bitumen

#220063-2xx single ply (pvc, fpo, tpo etc.)

Console Anchors

#210066 Wood Screw

#250088 Hanger Bolt Wood (M12x200)

#210067 Concrete Bolt (Ø10x80)

#250082 Hanger Bolt Concrete (M12x200)

#215004 Toggle Anchor (M12x200)



Console Adapters and insulation

#250087 Console Adapter (Ø80)



#250084-150 Console Adapter M12 (Ø40x150)

#250085-300 Console Adapter M12 (Ø40x300)

#250086-450 Console Adapter M12 (Ø40x450)



The Insulation Tube (Ø40x50) will included in the article numbers #250084, #250085 and #250086.



Tools and symbol overview

The following list presents the recommended tools for performing an efficient and correct installation of the Roof Console into wooden rafters in cold roof constructions.



Ø6 mm Drill



Drill driver



Drill driver with a TX40 bit



Bitumen: Gas Torch
Single Ply: Hot Air Furn



Manual handling

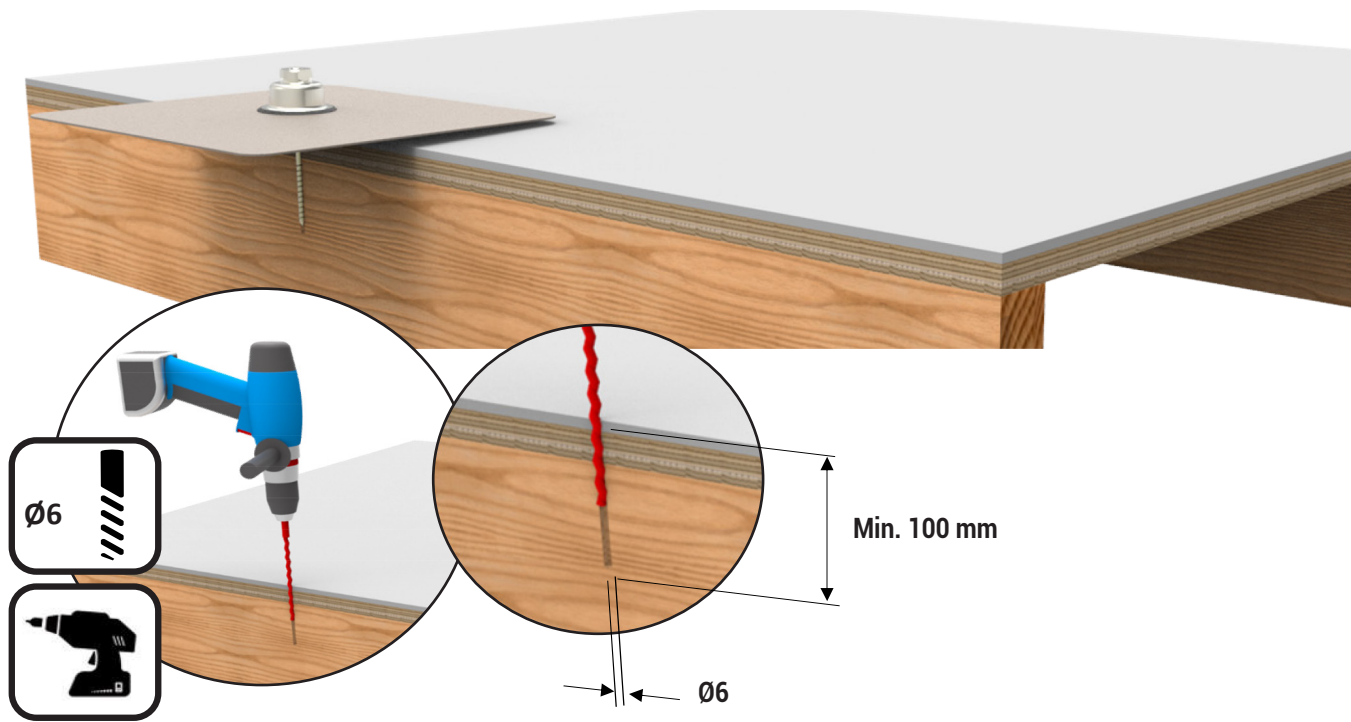


Tightening operation (clock wise rotation)



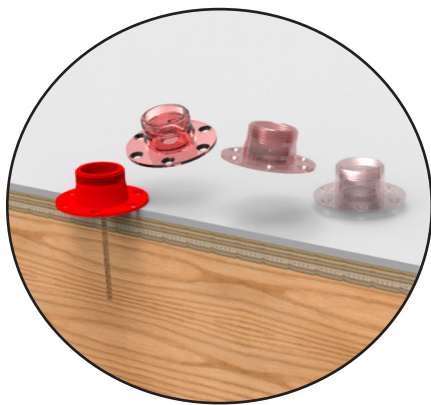
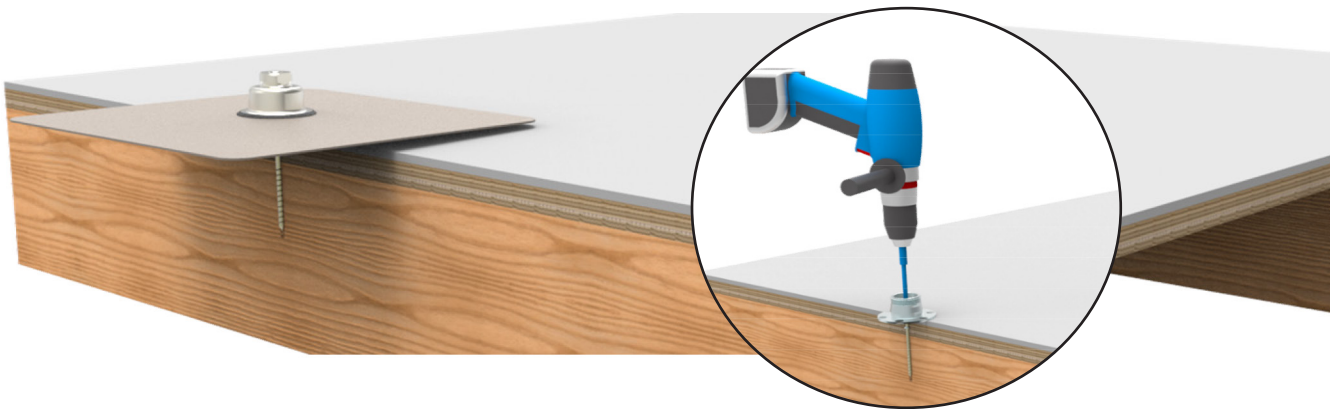
1. Anchor and Console Installation

(Anchor pre-drilling)

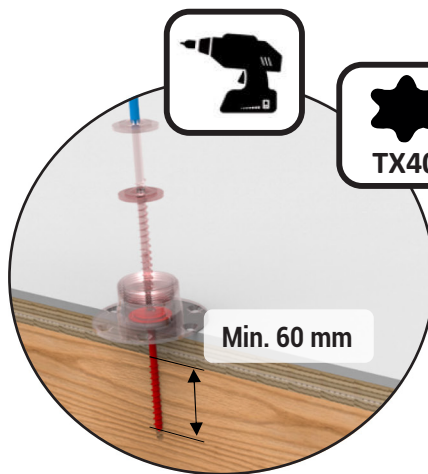


At the center position for each Roof Console a hole for the Wood Screw must be drilled with a drill diameter of $\text{Ø}6$ mm and with a minimum length of 100 mm in accordance with the length of the screw.

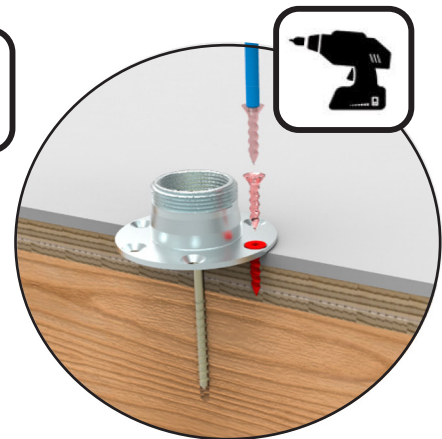
2. Anchor and Console Installation (Wood Screw and Console Adapter)



The Console Adapter is brought to the intended position concentric to the pre-drilled hole.



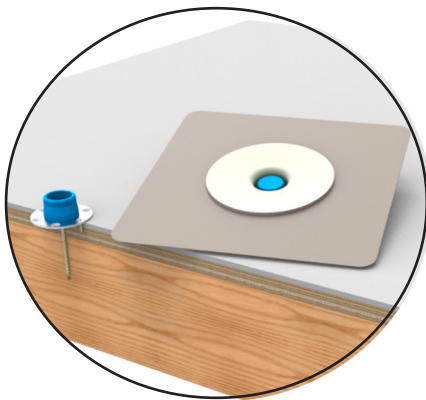
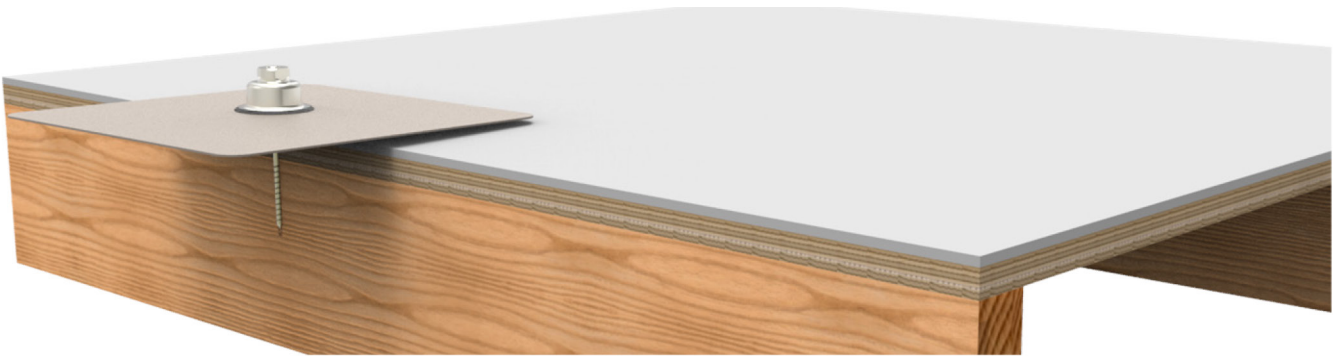
With the Console Adapter in position the Wood Screw is turned in, using a TX40 bit while ensuring that the minimum effective set length into the rafter is matched.



When the Wood Screw has been firmly fixed an additional screw can be added in one of the holes in the outer Console Adapter Ring, in order to fix the Console Adapter from rotation while performing the last steps of the Console installation.



3. Anchor and Console Installation (Console installation - membrane torching or welding)



While installing the Roof Console the internal thread of the Console Adapter must be engaged with the M35 thread inside the Console housing.



With the pre-assembled Console Adapter installed the Console is simply mounted by engaging the M12 thread of the Console Adapter with to the upstanding Hangerbolt.



Once the Console has been brought to the intended position in good contact with the general roofing surface and with its perimeter edges correctly aligned, the membrane of the console is either torched or welded to the existing roof.

The welding process depends on the type of membrane.

