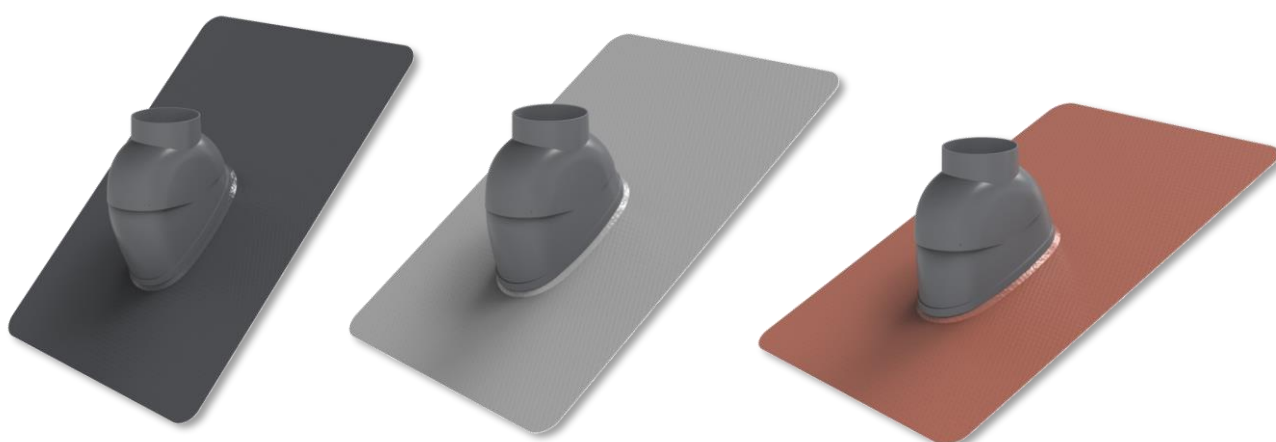




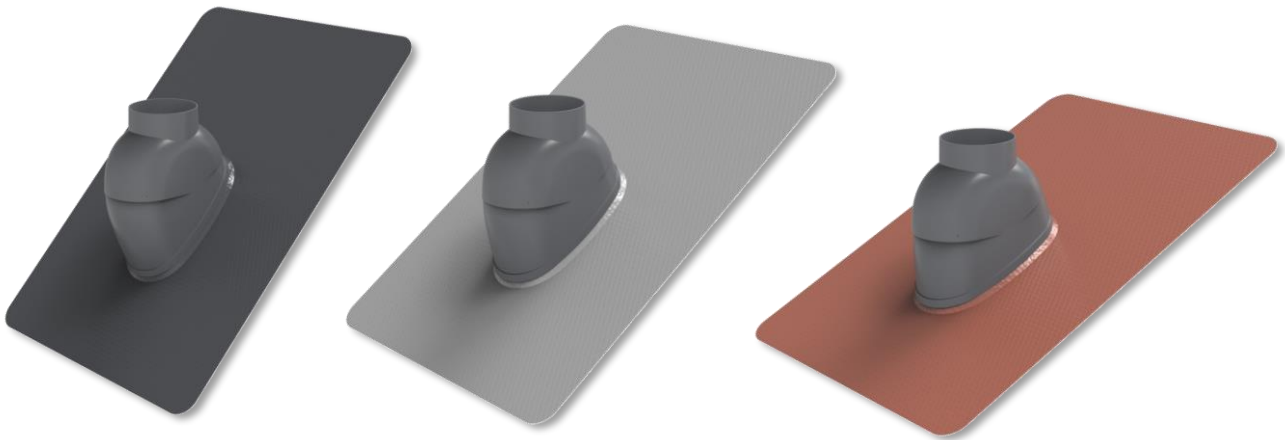
FIXNORDIC.DK

Plastic flashing for gas flues From FIXNORDIC



DATASHEET

**Plastic flashing for gas flues
From FIXNORDIC**



PRODUCT DESCRIPTION

Plastic flashings for gas flues

Safe penetration of roof surfaces with tiles, eternit, etc.

The plastic flashing for gas flues is a quality penetration produced from solid weatherproof plastic components and integrated with a mouldable and dimensionally stable piece of FastFlash in 3 standard colors. The flashing is suitable for roof types with a flat or wavy surface such as brick, eternit or steel, and the flashing can be used on roof slopes from 10° - 48°.

The flashing comes with a basic dimension of Ø125 mm with fit for finishing pieces for gas flues corresponding to the models on the market according to EN 14471.

In relation to the assembly, the flashing is delivered with FastFlash dimensions selected to ensure an efficient assembly, where in most cases a technically correct installation can be carried out with sufficient overlap and overlap lengths with the standard units.

MATERIALS

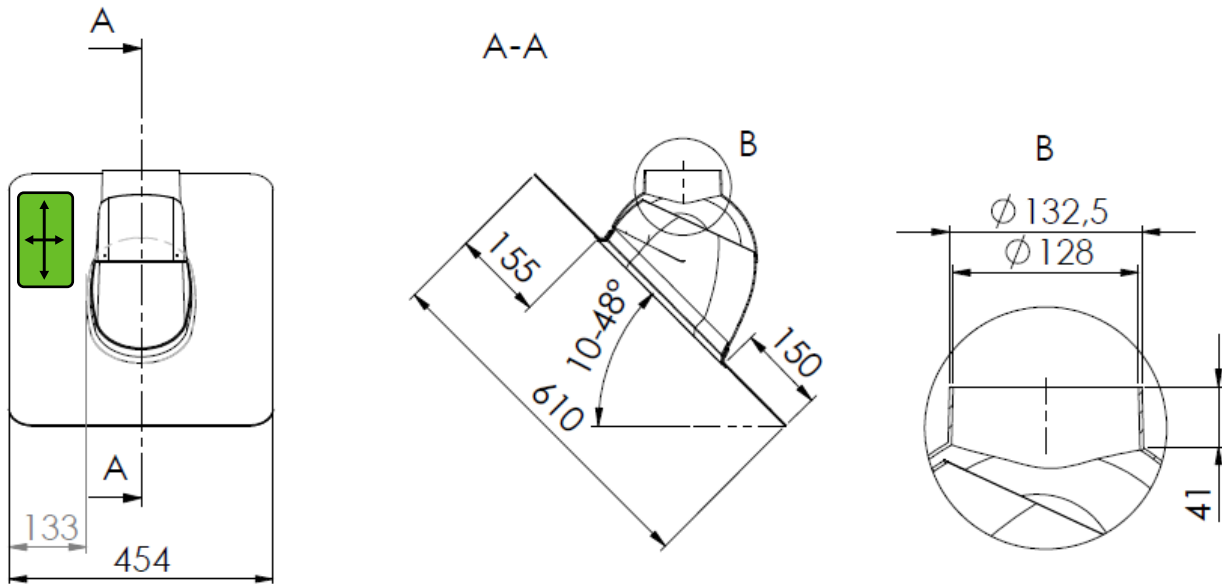
Flashing components:	Black ASA plastic
Inddækningsmateriale:	FastFlash
Screws for assembly:	Black lacquered stainless self-drilling screws
FastFlash colours:	Black (RAL9011), grey (RAL7037) and red (RAL8004)

INSTALLATION

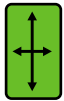
For more information on the detailed installation, please refer to the current installation instructions.



DIMENSIONS AND TECHNICAL CHARACTERISTICS



! When installing, it is important to take into account the direction of the FastFlash, so that the shaping up against the surface of, for example, eternit or tile is carried out appropriately and without the risk of damaging the flashing material.



The symbol shows the stretch directions, where the FastFlash has the greatest stretch capacity across the flashing. When performing design adjustments, attempts should be made to distribute the stretch over an area, thereby avoiding overdrawing the flashing material.

When installing, it should also be ensured that no significant deformations happen in the assembly zone at a distance of about 25 mm (see the current assembly instructions).

ARTICLE NUMBER OVERVIEW - FLASHING

Product name	Variant	Article number
Flashing for gas flues, soil pipe ventilation and ventilaton	Black	951254801-520
Flashing for gas flues, soil pipe ventilation and ventilaton	Grey	951254801-521
Flashing for gas flues, soil pipe ventilation and ventilaton	Red	951254801-522

ARTICLE NUMBER OVERVIEW - ACCESORIES

Product name	Article number
PERFORM hammer	288058000
PERFORM glue (black 290 ml)	288059529
PERFORM glue (grey 290 ml)	288059532
PERFORM glue (red 290 ml)	288059534

FIXNORDIC A/S
 Satellitvej 3 • DK-8700 Horsens
 T +45 76 83 11 41
 Email: fixnordic@fixnordic.dk



PART OF JUAL GROUP
 JUAL A/S // FIXNORDIC A/S // BYGTJEK A/S
 PERFORM A/S // SCANHEAT A/S //
 JUAL Roofing Technology China