



FIXNORDIC.DK

Cable flashing Ø50 From FIXNORDIC



EN1253



TÜVRheinland®

LGAM

Product testing and certification have been performed based on EN 1253



DATASHEET

Cable flashing Ø50
From FIXNORDIC

PRODUCT DESCRIPTION

FIXNORDIC cable flashing Ø50

Cable flashing for safe penetration on the roof.

Application

Safe cable penetration for installations on roofs with roofing felt or foil membranes, through which cables can be pulled without obstacles from edges and protruding contours. The cable flashing is available in two models:

Ø50 x 180° Stainless steel with EPDM protection ring for flat roofs

Ø50 x 135° Black, powder coated stainless steel with heat shrinkable tubing for applications on flat roofs and pitched roofs

ORDERING

Type	Diameter	Bend	Colour	Article number	Membrane
Cable flashing Ø50 x 180°	Ø50	180°	Blank	220054-xxx	E.g.: 220054-xxx "xxx" is the membrane code
Cable flashing Ø50 x 135°	Ø50	135°	Black RAL 9005	220058-xxx	
Find the membrane code under "Membrane overview" at fixnordic.dk					

MATERIALS

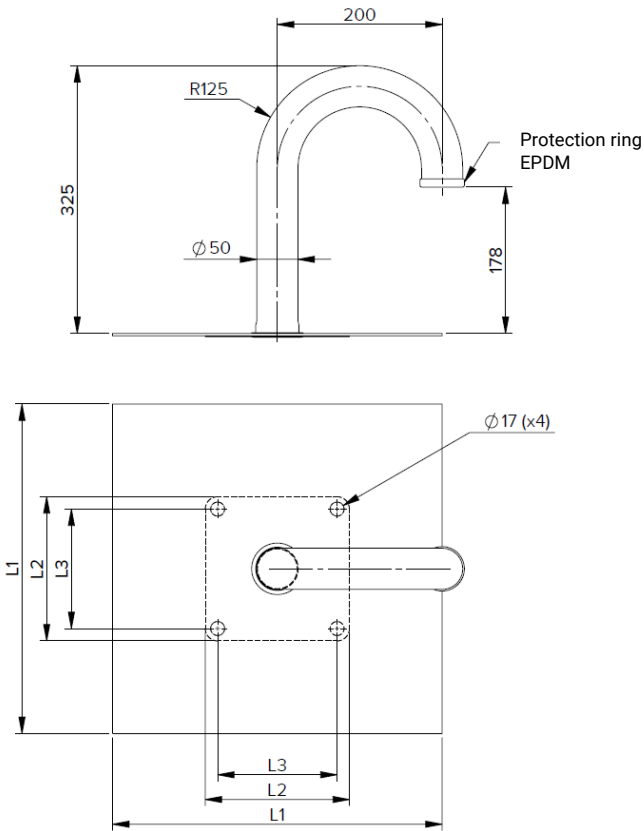
Flange: Stainless steel EN 1.4301 (AISI 304)

Pipe/bend: Stainless steel EN 1.4401 (AISI 316) with an EPDM rubber edge. (Powder coated RAL 9005 on the Ø50 x 135° version).

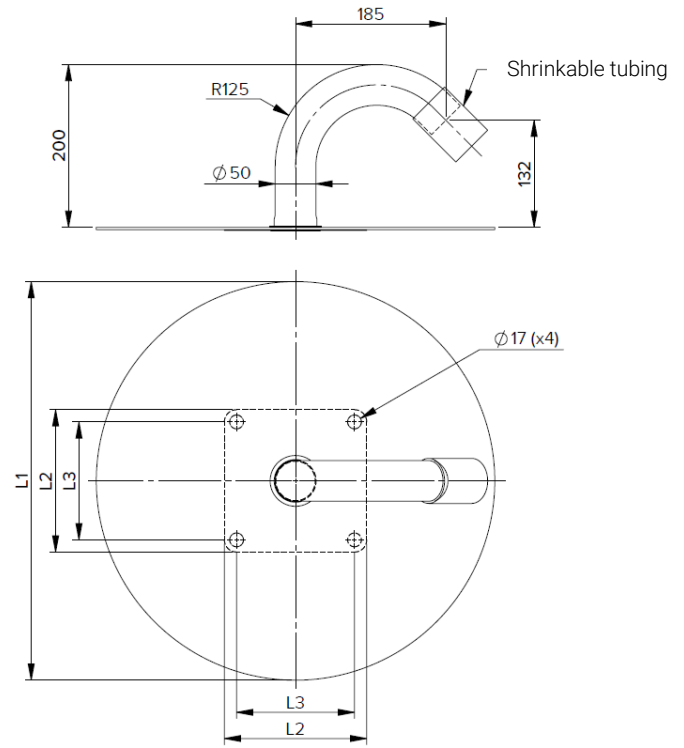
Membrane: The type of the integrated membrane shall be specified for each project

Installation and use must take place according to the latest industry instructions, and compatibility with the membrane of the roof must be ensured.

TECHNICAL DATA



Ø50 x 180°



Ø50 x 135°

Type	L1		L2		L3	
	Bitumen	Foil	Bitumen	Foil	Bitumen	Foil
Cable flashing Ø50 x 180°	400 x 400	400 x 400*	175 x 175	230 x 230	145 x 145	200 x 200
Cable flashing Ø50 x 135°	Ø490	400 x 400*	175 x 175	230 x 230	145 x 145	200 x 200

* For variants with foil membrane the dimension L1 depends on the foil type.
All variants with foil membrane are made with a square foil membrane with rounded corners.

GENERAL ASSEMBLY INSTRUCTIONS

FIXNORDIC cable penetration $\varnothing 50$ must be fixed using standard telescopic screws to ensure sufficient flexibility and thereby improve the durability of the installation. After the pipe flashing is fixed, the integrated membrane must be welded together with the roof membrane. It is recommended that sharp ends of the cables be cut away before the cables are passed through the cable penetration.

